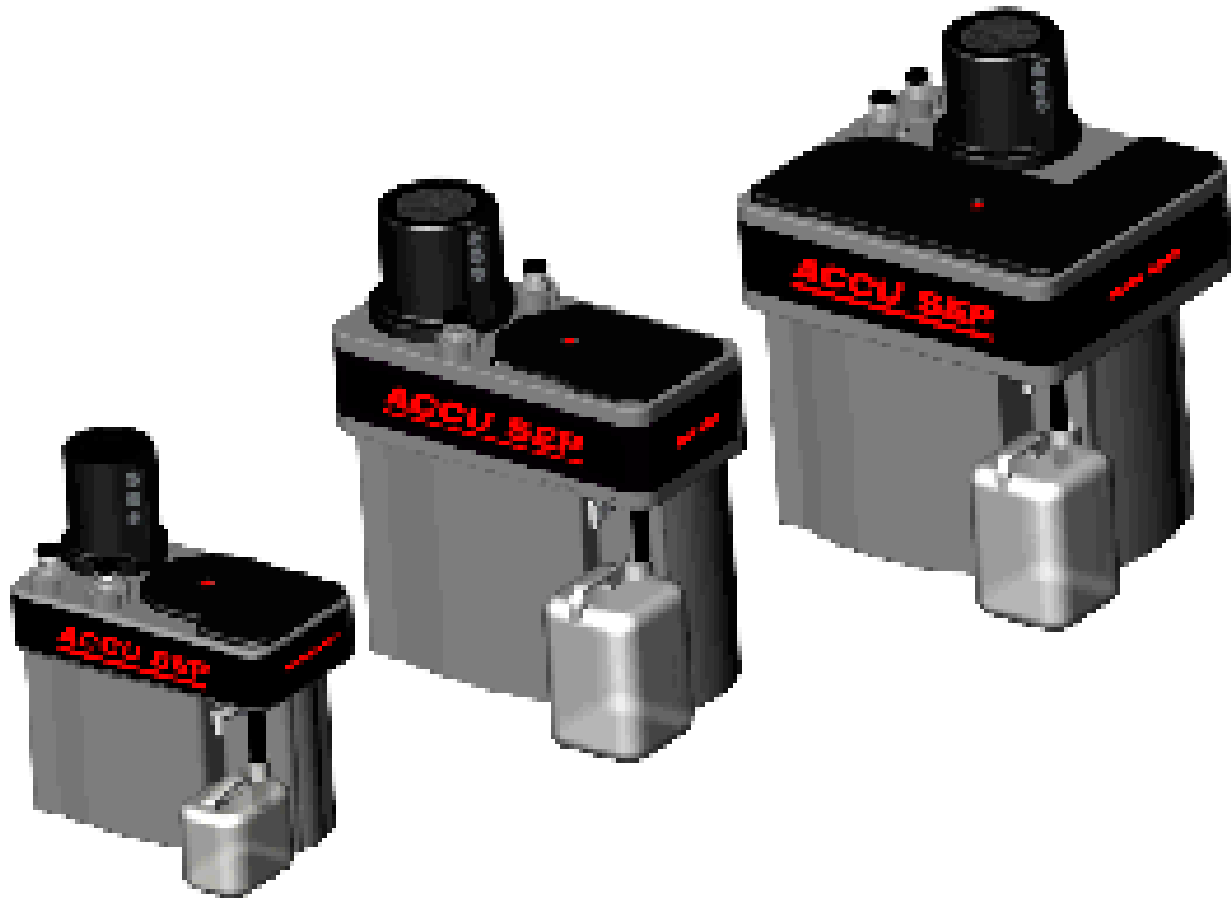


# ACCU-SEP

## Oil/Water Separator



### Features & Benefits

- ✓ **Real Life Reliability** *Designed for 90°F @ 90% RH Summertime Conditions!*
- ✓ **Improved Filter Design** *Exclusive submerged Reverse Flow Pre-Absorber & Extra Wide Filter Beds result in long service life and cleaner discharge water. Especially during hot and humid weather conditions.*
- ✓ **Reduced Maintenance** *Filters typically last up to 40% longer.*
- ✓ **Flow Indicator** *Verifies when Carbon Bed requires replacement. Stores evidence of decreased flow condition until manually reset.*
- ✓ **User Friendly** *Diffuser rotates at 90° intervals to make it easy to pipe your Condensate Drains to three 1/2" npt Inlet Piping Connections. Elevated Carbon Bed Handles (AS30/60>) keep you cleaner.*

---

## AIR SYSTEM PRODUCTS, INC.

51 Beach Ave. • Lancaster, NY 14086 • (716)683-0435 FAX (716) 683-7128 • [www.airsyspro.com](http://www.airsyspro.com)

*"The Best in Condensate Drain Technology"*

## World Class Design

ACCU-SEP sets a new standard in providing the most advanced gravimetric methodology and technology for reducing the volume of compressed air condensate destined for disposal. The ACCU-SEP features superior function and user friendly serviceability characteristics all packaged in an attractive rotomolded design. This offers you greater reliability, longer filter life and, cleaner discharge water quality than ever before.

## User Friendly Features

Piping is easy because our *Inlet Diffuser Assembly* has three 1/2" npt connections, and can be rotated at 90° intervals. It sits atop a removable *Sediment Chamber*, with an internal *Separation Filter*. The Separation Filter accelerates the coalescing process by making fine oil droplets larger so they separate fast. The Sediment Chamber prevents rust, dirt, and scale, from escaping into the Main Reservoir.

An easily removable *Access Lid* is independent of the Inlet Diffuser Assembly. This lets you get to the large Main Reservoir that houses both the Pre-Absorber and Carbon Bed(s) without having to move the piping.

The Pre-Absorber is submerged inside the dedicated, *Reverse-Flow Pre-Absorber Chamber*. The replaceable Pre-Absorber possesses a proprietary, non-restrictive, polar absorber that extends the life of the carbon bed.

Submerged, *Extra-Wide Carbon Bed(s)* last up to 40% longer and provide up to 63% more flow paths for longer life. The Carbon Bed handles are secured above the water level so your hands stay clean (AS30/60). While our exclusive *Vaccu-Break Conduit* makes carbon bed removal easier.

Weather conditions and air demands vary the condensate volume every minute. ACCU-SEPS unique bright red *Flow Indicator* warns of the first sign of trouble and remains visible until it is reset. This lets you know when it's time to change the Carbon Bed.

The *Oil Outlet Weir* is externally adjustable and comes complete with a translucent *Oil Container*. This prevents spills by allowing you to see how much oil has been collected.

*External Placement Wells* are molded into the top of the ACCU-SEP to house the *Sample Jar* and *Reference Jar*. A *Sample Valve* is provided for monitoring the exiting water quality. This eliminates guesswork as to when your Carbon Filter needs replacement - saving time and money.

## Performance

The ACCU-SEP Oil/Water Separator is a heavy-duty unit designed for real-life, 24 hour continuous, summertime operation. **Our ratings are based on 90°F @ 90%RH.** So, why should that matter to you?

Summer's hot, hazy and humid weather brings 238% more condensate than you get at 70°F/70%RH. That is when your OWS better work! Failure to size for summer can cause competitive units to stop working, overflow, and make a mess for you when you need it most!

The following table shows how much condensate a 100 HP (500 cfm) air compressor (with a refrigerated dryer) can send to an oil/water separator - every hour.

Degrees F Relative Humidity	Gallons Per Hour
90° F / 90% RH	6.90
70° F / 70% RH	2.90

You can be confident an ACCU-SEP will work in your ambient conditions *all* year long. Properly applied, installed and maintained, an ACCU-SEP can separate the oil and discharge the water with less than 15 ppm of oil remaining in it.

Note: ACCU-DRAIN Demand Drains are uniquely engineered to provide optimum performance from the ACCU-SEP and extended filter life.

Model	Max. CFM Capacity** 90°F/90%RH	70°F/70%RH	Height	Depth	Width	Inlet NPT	Water Outlet	Oil Container Gallons	Weight Lbs.
<b>AS15</b>	150	357	30"	19"	26.5"	(3) 1/2"	3/4"	2.5	53
<b>AS30</b>	300	714	39"	21"	34"	(3) 1/2"	3/4"	5	77
<b>AS60</b>	600	1428	39"	31"	35"	(3) 1/2"	1"	5	120
<b>AS120</b>	1200	2856	39"	31"	72"	(3) 1/2"	(2) 1"	(2) 5	240
<b>AS180</b>	1800	4284	39"	31"	109"	(3) 1/2"	(3) 1"	(3) 5	360
<b>AS240</b>	2400	5712	39"	31"	146"	(3) 1/2"	(4) 1"	(4) 5	480

\*ACCU-SEP is not recommended for use with emulsifying lubricants such as Polyglycol, ATF, or Motor Oil lubricants with heavy additive packages.

\*\*The above ratings are based on a rotary screw air compressor operating on an ISO32/46 PAO or Turbine Lubricant with the best demulsibility in their class. Please contact your local Distributor or the Factory for proper sizing when using other types of lubricants and/or compressors. The maximum CFM capacity ratings listed may be increased by 25% if a refrigerated air dryer is not used.

All design specifications are subject to change without notice.

Distributed by:

**AIR SYSTEM PRODUCTS, INC.**

51 Beach Ave., Lancaster, NY 14086

(716)683-0435 ■ (716)683-7128

www.airsyspro.com